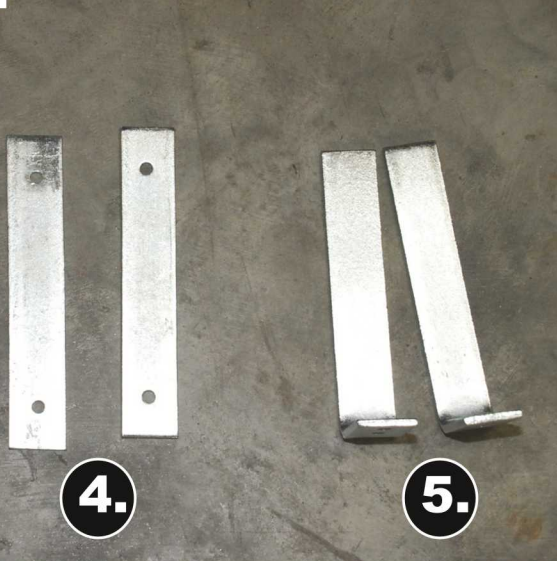
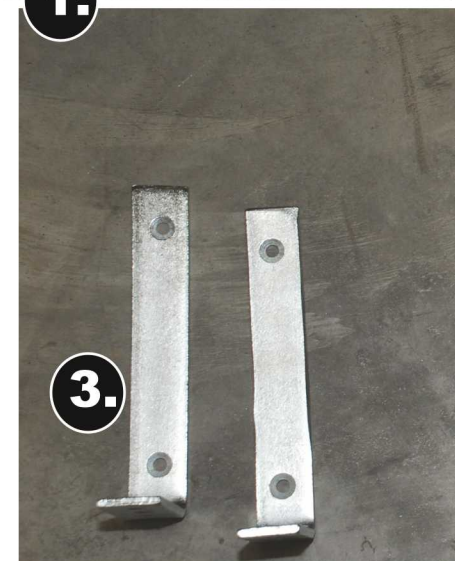
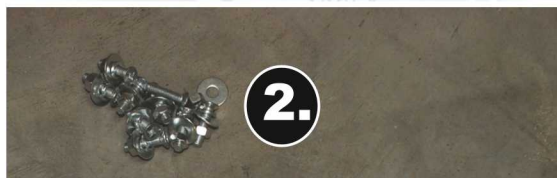




TAIL GATE FEEDER ASSEMBLY INSTRUCTIONS



Whats in the box?

1. Tail gate feeder
2. Bolts, Washer, Lock Washer, & Nut Set
3. Bracket
4. Flat Bar (100lb. only)
5. Hook Bar

Tools Needed?

1. Phillips head screw driver
2. Metric 10 wrench or socket

Instruction apply to both 100lb and 50lb Tail Gate Feeders. The 100lb. Feeder is used in the following demonstration.

Tail Gate Feeder Assembly Instructions

Figure 1

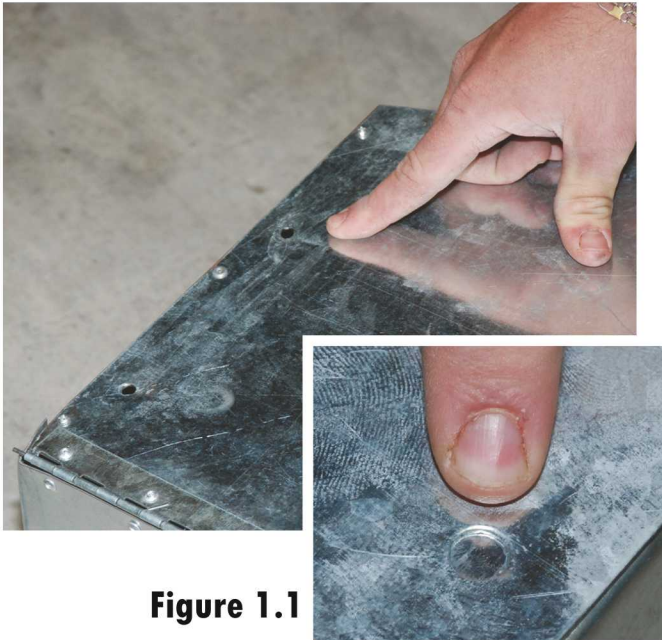


Figure 1.1

Step 1:

Locate the 2 small pre-punched holes on the back left and right edges of the feeder.

IMPORTANT:

The holes should be pre-punched.

See Figure 1.1

If they do not easily punch out with minimal effort, **DO NOT USE FORCE OR HAMMER.** Use a drill to drill out the hole.

PUNCH ONLY THE HOLES ON THE LEFT AND RIGTH EDGES FOR TAILGATE MOUNTING.

Center holes are for use with the Foreverlast Receiver Hitch Attachment (sold separately)

Figure 2



Figure 2.1

Step 2:

Position Bracket (Item 3) over the two holes on the **OUTSIDE** of the Feeder and Flat Bar (Item 4) over the two holes on the **INSIDE** of the feeder. The flat bar is only on 100lb. feeder. See FIGURE 2.

Secure Bracket and Flat Bar (100lb. feeder only) to Feeder using Bolt, Washer, Lock Washer and Nut Set (Item 2). Tighten with screwdriver and wrench. See FIGURE 2.1 and 2.2

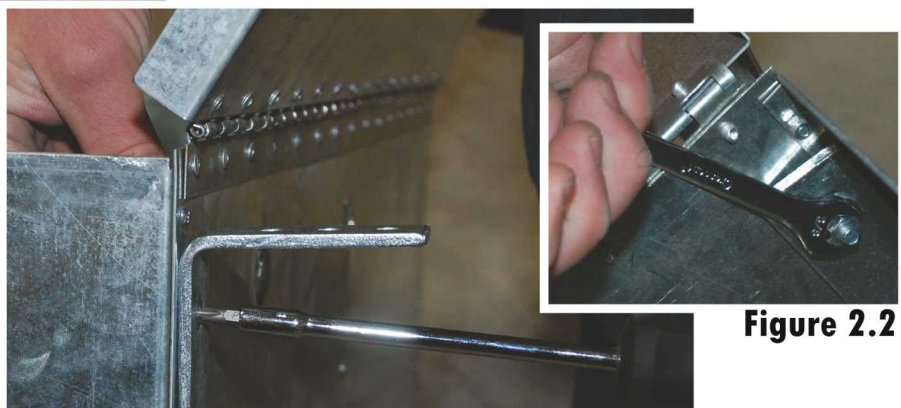


Figure 2.2

Tail Gate Feeder Assembly Instructions

Figure 3



Step 3:

Attach Hook Bar (Item 5) to Bracket (Item 3) using 2 Bolt, Washer, Lock Washer and Nut Sets (Item 2).

The Hook Bar (Item 5) can be attached in a variety of positions to fit your needs.

Figure 3.1



Step 4:

Using the provided control cord, connect end to 12 volt motor, and the other end of the power source.