



KastKing Spinning Reel Instructional Manual

Congratulations on your purchase of a KastKing Spinning reel. This reel is manufactured with the highest quality components and has been extensively tested to ensure that your day on the water is more productive. Please take a moment to familiarize yourself with the integrated performance-enhancing features of this reel before use. This will help you to optimize the reel's settings and even further increase your fishing success. We wish you the best of luck in your future fishing endeavors.

Warranty

Thank you for choosing a KastKing Product!

At KastKing, our mission is to achieve affordable innovation and we strive to provide you great products at the best price. KastKing warrants to the original purchaser that any KastKing products are free from defects in materials or workmanship for at least a period of one (1) year from the date of purchase.

KastKing is not responsible for normal wear and tear, for products used commercially or for failures caused by accidents, abuse, alteration, modification, misuse or improper care. There are no other expressed warranties beyond the terms of this limited warranty. In no event shall any implied warranties, including merchantability and fitness for a particular purpose, extend beyond the duration of the expressed warranty contained herein. In no event shall KastKing be liable for incidental or consequential damages.

Some states do not allow limitations on how long an implied warranty lasts or the exclusion of limitation of incidental or consequential damages, so the above limitations or exclusions may not apply to you. This warranty gives you specific rights and you may have other rights which vary from state to state.

For Warranty Claims, please call 516-243-8791 before you ship the damaged product back to KastKing, 425 Oak St, Unit A, Garden City, NY 11530

Beyond-warranty Support

In order for our customers to have full confidence and total peace of mind, KastKing offers the industry first, beyond-warranty support:

1. Request fishing reel or rod parts due to loss or user error damage
2. Request assistance in the set up and use of rods/reel/combos
3. Continue receiving support even after warranty expires
4. Learn tricks about fishing gear maintenance
5. Receive offers only available to current customers

To enjoy the beyond-warranty support, please sign up at the link below:
<https://www.kastking.com/warranty>
Or email your order number and phone number to:
beyond-warranty@kastking.com



Reel Care And Lubrication

Your new reel is designed to provide years of dependable service. But like any other precision machine, periodic cleaning and maintenance is required for continue peak performance. Reels made today require both a lightweight oil and grease. Oil and grease should be used sparingly; too much can have a negative impact on reel performance. There are lightweight oils and greases made specifically for fishing reels, that can be found on KastKing.com. Keep in mind, oils should be used to lubricate any moving part on the reel, e.g. ball bearings, bushings, handle joints ball springs, etc. Grease should be used to lubricate the main drive gear and pinion gear. It's recommended not to use any multipurpose oils when servicing your reel. Many of these oils have properties that attract dust and dirt to internal parts. This may cause excessive wear and reduce the life of the reel. After each trip, the reel should be checked for dirt and sand. If it has been exposed to saltwater, the spool should be removed and the entire reel rinsed in freshwater. Dry with a soft cloth and lubricate the reel as described above.



How To Remove Spool

Hold the reel in your hands with the drag knob facing you. Place your fingertips around the edge of the reel case and place your thumbs in the ports against the spool. Push the spool away from the case. Withdraw the spool from the body.

Components Name of KastKing Spinning Reel



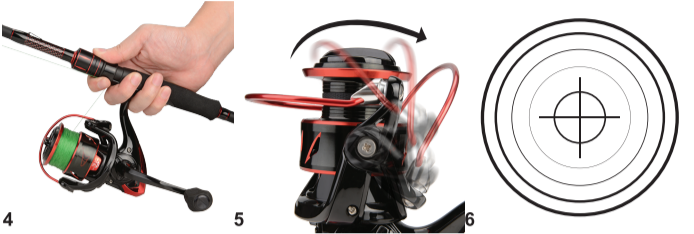
How To Cast Your Reel



Assemble your outfit. You can do this by tying on a practice plug, so you avoid hooking anything.

Hold the rod with your dominant hand. The reel should be below the rod. The foot of the reel is placed between your ring finger and middle finger. Although, if you have a more comfortable placement for it, that's fine.

Pull out or reel in your line until you have at least 5 inches of hanging line out of the top. Turn the handle of your reel slowly until the line roller is directly underneath your index finger.



Hold the line against your rod with the crook of your index finger.

Open the bail with your other hand.

Point the rod at your target.



In a smooth motion, bring the rod up vertically.

A. Allow it to flex (where the tip bends backward behind you, also referred to as "loading" the rod, and without pausing, push the rod forward. The movement should be happening at your elbow and wrist, not shoulder.

B. When the rod tip is halfway to your target, relinquish your index finger from the line.



C. If you happen to observe the plug went directly up, you released the line too early.

D. If the plug crashed straight toward the ground, you released the line too late.

Close the bail with your opposite hand.

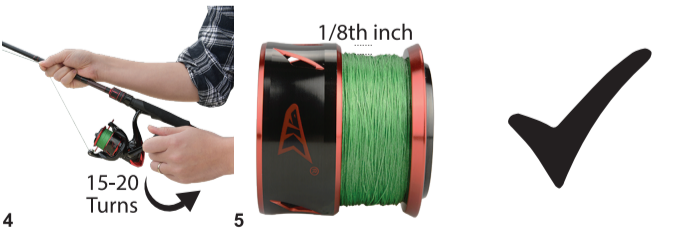
How To Spool Line Your Own Spinning Rod



Open the bail. That's the little wire arm on the reel that flips up and down. Up is open, down is closed.

Tie the line on the arbor with an uni knot.

Put the spool on the floor, make sure the line comes off filler spool in a "Counter clockwise" direction (it doesn't matter if the label is face up or face down). This will help to reduce line twist while spooling on reel. A spinning reel requires that the line be loaded onto the reel the same way it comes off the spool.



With your free hand, use your thumb and index finger to apply light pressure to your line as you give the handle 15 to 20 turns. Always apply light pressure on the line while loading it, otherwise the line will go on loose and tangle later.

Fill your spool until it is 1/8th inch from the rim. Overfilling or underfilling your spool will create problems when you cast.

Congratulations! You're all done. You can use a rubber band to secure your line on the spool, or wrap it around the tab in your spool (if it comes with one).

How do I set the drag on my reel?



Assemble your rod and attach the reel. Thread the line through all the guides from the butt to the tip top.

Tie the line to the hook of the scale.

Hold the rod at a 45° angle.

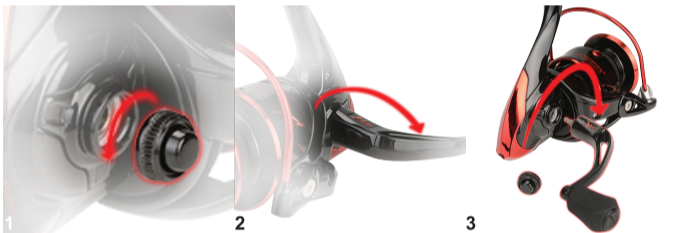


Pull down on the scale. Take a reading on the scale the moment the drag begins to slip.

Adjust the drag mechanism until the drag slips at the correct setting for the line strength you are using. *On a spinning reel, the drag mechanism is usually on the top of the reel (front drag), though it can sometimes be found on the back end of the reel (rear drag).

The scale method is the most accurate way to set your drag. You can try to set the drag by feel, many people do. But many of these anglers have their drag set too tight and too tight equals lost fish.

How To Switch The Handle: Right- or Left-Hand Retrieve



Remove the dust cap and keep it handy. Hold the reel firmly in the palm of your hand. Do not let the spool spin.

Hold the handle near the base of the reel and quickly snap the handle backward (toward the rear of the reel). Not all models have left hand thread. If your handle does not loosen, turn the opposite way.

Unscrew the handle until it comes off. Place the dust cap over the opening. Screw the handle into the other side of the reel.

4 On models with a folding handle, to collapse the handle for storage, loosen it just enough for the handle to hang down but still remain attached to the reel.

How To Clean And Lubricate Spinning Reels



- Things You'll Need:
- 1 Reel Lubricating Oil & Grease
 - 2 Spinning Reel
 - 3 Clean Cloth
 - 4 Soapy Water
 - 5 Clean Water
 - 6 Small Or Medium Bristle Brush

- Step1 Use a clean cloth and soapy water to clean the reel, removing any excess dirt or debris. Particularly pay attention to the spool when cleaning. Wipe the reel with water only to remove any soap and remaining dirt and then wipe dry.
- Step2 Remove the handle of the reel. Unscrew the handle by turning or loosening a retaining screw on the opposite side. With the handle removed, clean inside the body of the reel to remove old lubricants and any debris. Use a small amount of lubricant inside the reel and reattach the handle.
- Step3 Open the bail of the reel and use the small brush to remove any debris or dirt from the bail mechanism. Also pay attention to the line roller, because pond scum and algae will accumulate here.
- Step4 Remove the spool from the reel by either removing a retaining knob at the front of the spool or by simple turning the spool counter-clockwise. Thoroughly wipe down the spool paying special attention to the inside front of the spool where water debris will accumulate.
- Step5 Use the small brush to clean any mechanism exposed with the spool removed. Apply a light coating of lubricant and reattach the spool.
- Step6 Wipe down the entire reel with a thin coating of reel oil. This will help provide a layer of protection to the reel and that will help with future cleanings.