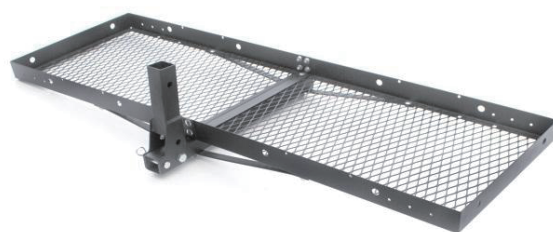




Assembly Instructions & User's Manual

Foldable Hitch Mounted Cargo Carrier

153315



Please keep this instruction manual for future reference

Customer Service: (888) 922-2336

7:00 am to 12:00 am CST (daily)

Live Chat at: www.academy.com

Email: customerservice@academy.com

(Made in China)

Table of Contents

Warnings.....	2
Tools and Parts.....	3
Assembly Instructions.....	4
Care and Maintenance.....	7
Warranty Information.....	7

Note: Before beginning assembly of product, make sure all parts are present. Compare parts with package content list and hardware contents. If any part is missing or damaged do not attempt to assemble the unit. Contact customer service for replacement parts.

Warnings

Do not exceed maximum weight capacity of 500lbs. when using 2" receiver bar.

Distribute weight evenly on platform.

This carrier is not intended for transporting humans.

Do not carry loads wider or deeper than carrier.

Do not carry flammable items on carrier.

Do not allow exhaust fumes to blow directly on items. This is a FIRE HAZARD.

Always check your trailer hitch's rated Tongue Weight before loading.




Place heavier loads closer to receiver, distribute the weight as evenly as possible from left to right.

Always check local DOT ordinances regarding the use of hitch carriers, in some regions it may be illegal to cover or obscure license plate and tail lights.

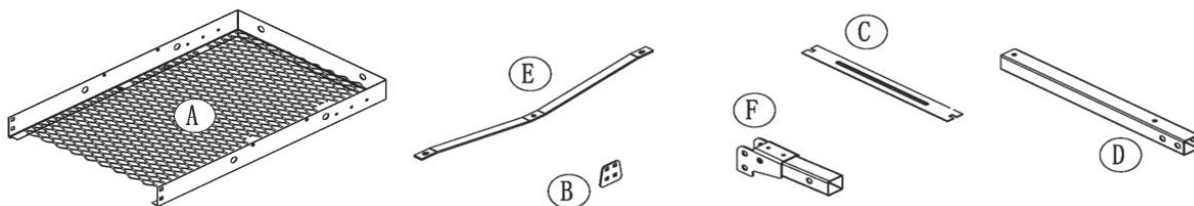
Always inspect your hitch carrier for loose bolts, damage or rusting before use, DO NOT USE carrier if damaged.

Make sure that carrier is secured on the trailer hitch mount and all loads are secured on the carrier.

Tools Required

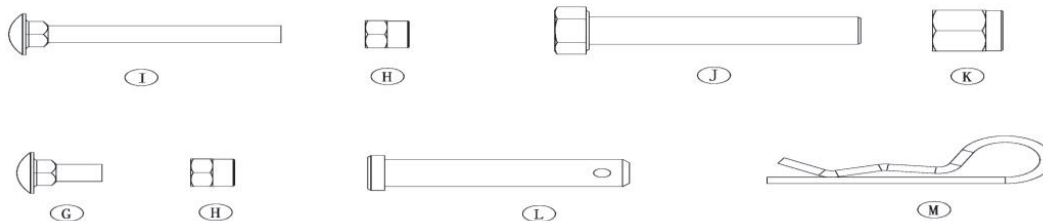
1	Open Wrench (1pc) Size=17mm	
2	Open Wrench (1pc) Size=24mm	
3	Monkey Wrench (1pc) Size=0-300mm	

Parts List



Item#	Description	Q'ty	Item#	Description	Q'ty
A	Platform Half	2	D	2" Shank	1
B	Connecting Plate	2	E	Support Bridge	2
C	Flat Brace	1	F	Foldable Connection Bar	1

Hardware

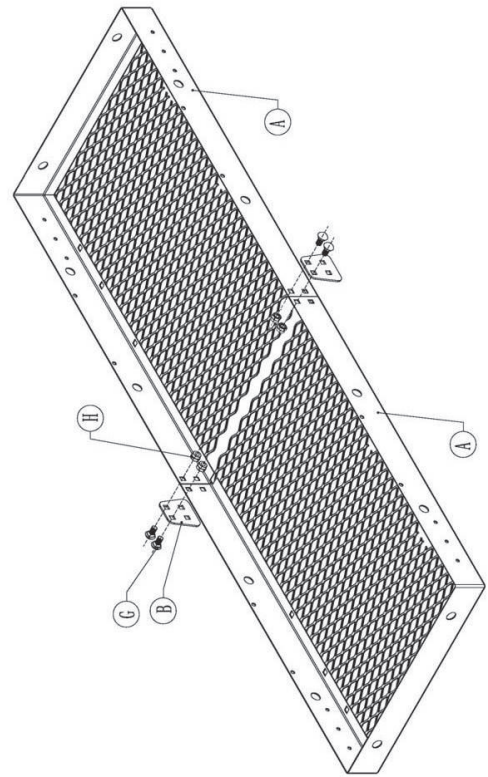


Item#	Description	Q'ty	Item#	Description	Q'ty
G	M10*20 Carriage Bolts	12	K	M16 Locknut	1
H	M10 Locknut	14	L	5/8" Pin	1
I	M10*75 Carriage Bolt	2	M	Clip	1
J	M16*80 Hexagon Head Bolt	1			

Assembly Instructions

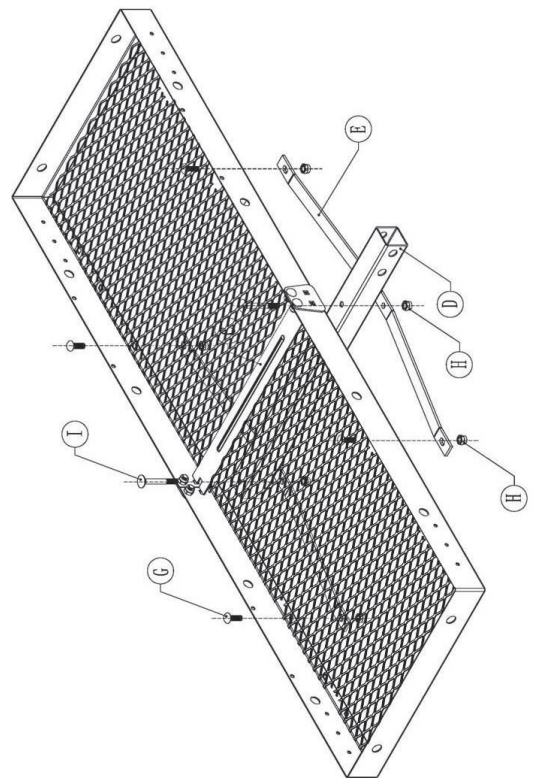
Step 1:

Align the two (2) platform halves (A) with connecting plate (B) As shown in Fig1
Secure the parts on the upper 2 side holes, refer to Fig1, using M10X20 bolt (G) and M10 locknut (H) (**Do not over tighten**). See FIG1



Step 2:

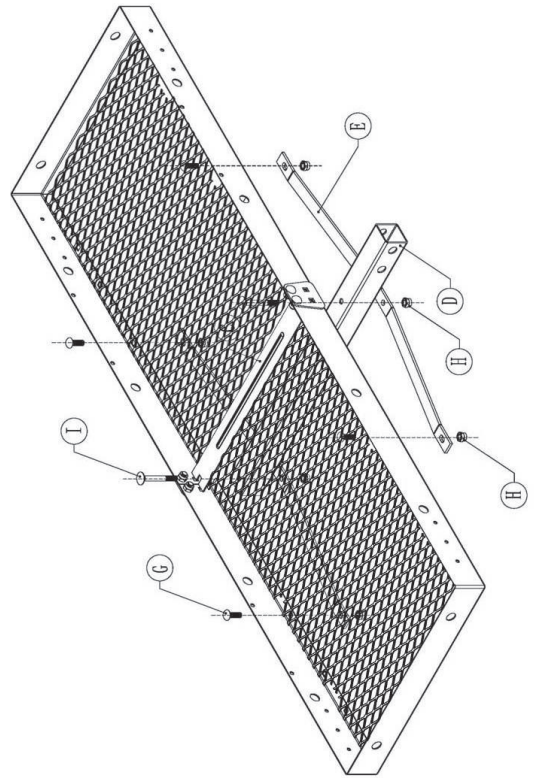
Put 2" shank (D) under the middle of platform (A), place support bridge (E) under 2" shank (D). Place flat brace (C) in the middle of platform (A). Connect by M10X75 carriage bolt (I), M10 locknut(H), align the holes, Secure with M10X20 carriage bolts(G), M10 locknut(H) (**Do not over tighten**). See FIG2



Assembly Instructions

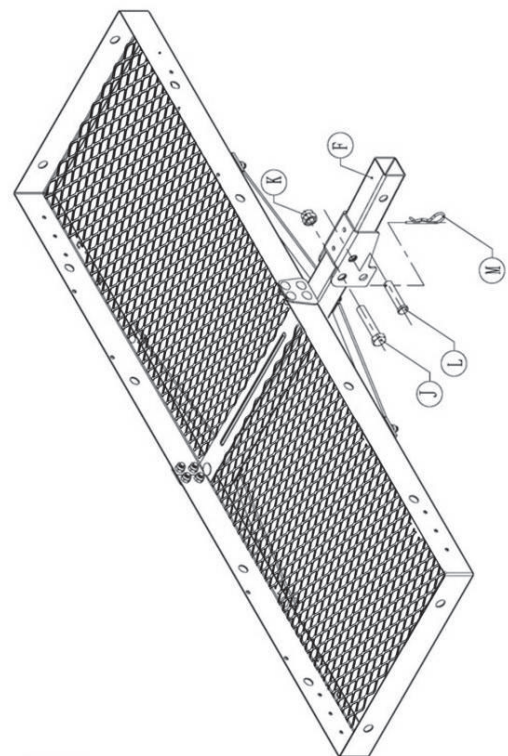
Step 3:

Secure the remaining two bottom side holes of platform half (A) using M10X20 carriage bolt(G), M10 locknut(H) to connect plate (B) (**Do not over tighten**) As shown in FIG3



Step 4:

Insert 2" shank (D) into the foldable connection bar (F), align all the holes. Insert the M16X80 hex head bolts (J) through the hole closest to the cargo carrier and secure with M16 locknut (K), The pin (L) should be inserted in the hole closest to the vehicle. And Pin (L) is needed for horizontal rotation and rotating 90 degrees, insert clip (M) securely into the hole in 5/8"Pin (L). See FIG4 .



Assembly Instructions

Step 5:

Tighten all the bolts and locknuts.

IMPORTANT! Check that all connections are tight.

Step 6:

To fold the basket, remove pin (L), fold basket up, and place pin (L) in the lower hole. The clip (M) must always be attached to the pin.

Care and Maintenance

Visual inspection **MUST** be made prior to each use of the cargo carrier. Check for cracks, cracked welds, missing or damaged parts. Any carrier that appears to be damaged in any way should not be used until a manufacturer or supplier's authorized repair center makes necessary repairs.

Make sure that all bolts are tightened.

Check all mounting hardware prior to each use and make sure it is secure before using the cargo carrier.

Keep cargo carrier free from dirt, grease or other debris.

BECAUSE OF THE POTENTIAL HAZARDS ASSOCIATED WITH THE MISUSE OF EQUIPMENT OF THIS TYPE, NO MODIFICATIONS SHALL BE MADE TO PRODUCT.

Warranty Information

This product has been manufactured under the highest standards of quality and workmanship. We warrant to the original consumer purchaser that all aspects of this product will be free of defects in material and workmanship for one year from the date of purchase. A replacement for any defective part will be supplied free of charge for installation by the consumer. Defects or damage caused by the use of other than genuine parts are not covered by this warranty. This warranty shall be effective from the date of purchase as shown in the purchaser receipt.

This warranty is valid for the original consumer purchaser only and excludes industrial, commercial or business use of the product, product damage due to shipment or failure which results from alteration, product abuse, or product misuse, whether performed by a contractor , service company , or consumer. We will not be responsible for labor charges and/or damage incurred in installation, repair or replacement nor for incidental or consequential damage.